



ROCKVILLE SISTER CITY CORPORATION NEWSLETTER

Rockville Sister City Incorporated is a non-profit corporation founded in 1986 in order to support and promote mutual understanding through personal experience based on Youth, Educational, Cultural and Commercial Exchanges among Sister Cities throughout the World.

<http://www.rocknet.org/Community/SisterCities/>

PRESIDENT'S MESSAGE

Dear RSCC Members and Friends,

The last few months have been a very busy and exciting time for the Rockville Sister City Corporation. Foremost has been the progress on completing the Friendly Exchange Relations Agreement with Jiaxing, China. We are now anticipating the formal execution of that agreement during a two-day visit of a delegation from Jiaxing on September 13 and 14, 2009. That ceremony will be a public event in the Rockville Town Center during the noon hour, when we hope many local citizens and workers will be present.

Our German connection has been very active, too. The Deutsche Amerikanische Gesellschaft Rockville-Pinneberg just celebrated 25 years since the founding of the association. I had the honor of attending the festivities and addressing the assembly . . . *auf Deutsch* (in German) no less. Also, a group of 11 students from Wootton High School and their advisor Tony DeRosa were in Pinneberg for a three-week exchange with the local *Gymnasium*. A description of that trip and several essays by the returning students are included in this newsletter. It is clear from the students that these exchanges do go far in helping people understand others who come from a different culture and speak a different language. We are expecting a group of students from Pinneberg to arrive in Rockville in September, and planning for that exchange is wrapping up.

We have been very active in supporting Montgomery County initiatives in promoting new Sister City relationships and have met with the Maryland Secretary of State to give him insight into our experiences and to help him to gain a better understanding of how such relationships can be nurtured at a state level. Fortunately, these contacts benefit RSCC as well through new contacts, guidance, and advice. You can also read about our support of Sister Cities International's Race and Festival for World Peace in a brief article in this newsletter. Participation in that event on Saturday, October 24, 2009 is open to all.

We are pursuing several new initiatives for fundraising and cultural activities and are seeking help from interested members of the public as described elsewhere in this newsletter. If you have a few hours you could lend to support any of these efforts, please contact me at jfmccjr@comcast.net or by telephone at 301-926-6059. I think you will find that helping people to understand cultural differences is a very rewarding effort.

Our Annual Membership meeting will be held at the Glenview Mansion in the Rockville Civic Center on Tuesday, September 22, 2009 at 7:30 PM. This meeting is primarily for members, but if you are interested in learning more about Sister City programs, you are welcome to attend.

Lastly, we are planning an observance of German-American Day with a dinner at the Old Europe

restaurant on Sunday, October 4, 2009. This celebration is a new event for us, but hopefully it can become an annual event for our organization. German-American Day commemorates the founding of the first German community in Colonial America in 1683. This event is open to the public.

By James F. McConkey, Jr., President – RSCC

Cultural Events

Big Doings in September

By James F. McConkey

On September 13-14, a five person delegation from the City of Jiaxing in China will visit Rockville to sign a Friendly Exchange Relations Agreement. This is a necessary first step under Chinese government regulations toward the formation of a Sister City Relationship such as that we currently enjoy with Pinneberg, Germany.

The Rockville Sister City Corporation will host the delegation through most of their visit and has planned a very intensive program to introduce the Chinese to our city and its people.

The delegation will be welcomed at the Glenview Mansion on Sunday, September 13, by President Jim McConkey, a group of officers from the RSCC, members of the organizing committee, and representatives of Sister Cities International. Following the welcoming ceremonies, they will meet with the delegation to discuss what can be accomplished under the new agreement and what can be expected as we move toward a full Sister City relationship.

After the discussion, the delegation will be taken on a tour of some principal sites throughout Rockville, including the Civic Center facilities, the Sister Cities Friendship Bridge, the Thomas Farm Community Center, the Universities at Shady Grove, Shady Grove Hospital and the Senior Center. The tour will come back to the Mansion

where a luncheon, open to all members of the RSCC and members of the Asia Pacific



American Task Force, will be the first chance for the delegation to have contact with interested persons from the community.

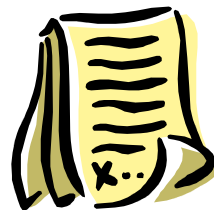
After lunch, the delegation will visit the Rockville Library in Town Center to see its Chinese exhibits and book collection. The group will then be met by Sally Sternbach who will take them around the corner to the Business Incubator and introduce them to some business leaders and concepts for economic development as promoted by Rockville Economic Development, Inc. (REDI).

Following the economic meetings, the group will be conducted on a tour of the Strathmore Music Center by Council Member and Musical Director, Piotr Gajewski.

Then, in the evening, the delegation will meet the Mayor and Council and some of the city staff at a banquet to be held at Clyde's Tower Oaks Lodge.

On Monday, September 14, the delegation will be taken to College Gardens Elementary School to be introduced to its Chinese Language Immersion Program and later will visit Montgomery College to explore academic exchange possibilities.

*Please attend the Signing Ceremony
establishing the relationship between Jiaxing and
Rockville at the Town Center pavilion,
September 14, 12:30 – 1:00 PM.*



At 12:30 PM, the delegation and the Mayor and Council will convene at the pavilion in the New Rockville Town Center for the ceremonial signing of the Friendly Exchange Relations Agreement. A number of dignitaries are expected from the city, county, state, and from the Chinese Embassy. **The public is urged to attend and to support the start of this new partnership.**

The afternoon will be spent at City Hall meeting with various departments to learn about the city administration, our infrastructure, and our initiatives toward a green environment and town redevelopment.

In the evening, the delegation will be received by the Mayor and Council, in chambers, where they can be introduced to Rockville via Channel 11 Rockville TV.



The visit will conclude with a celebratory dinner at the Seven Seas Chinese Restaurant on Jefferson Street. **This event is open to the general public.** Tickets for the dinner, inclusive of wine and taxes, are being sold for \$38.00 per person. Interested parties can mail a check to RSCC, c/o City Hall, 111 Maryland Avenue, Rockville, MD 20850 before September 8, 2009. Seating is limited, so get your reservations in early. Please name the expected guests when you make your reservation.

For further information about any of these events, please contact President, James McConkey, at jfmccejr@comcast.net or phone 301-926-6059.

German-American Day

By James McConkey

German-American Day commemorates the arrival of 13 German families from Krefeld, Germany to the Philadelphia area on October 5, 1683. The families founded Germantown, Pennsylvania, which is now incorporated within greater Philadelphia. More importantly, the settlement was the first attempt to establish a German community in colonial America.

While these families established an important community, the first Germans arrived earlier with the Jamestown settlers in Virginia and brought with them glass blowing and other skills that were the foundations of American industry. Later settlers brought with them beer-making techniques, which

found their way into all the great breweries, most of which exist to this day.

Germans fought on both sides during the American Revolution. It is well known that Washington crossed the Delaware River with his ragged army to surprise and defeat the Hessian mercenaries of the British Army at Trenton. What is not as well known is that Washington's body guard was composed of German soldiers, who stayed with him until his return to Mount Vernon after the war.

The holiday was originally celebrated in the nineteenth century but died out during WWI when anti-German sentiment ran high. It was revived in 1983 by President Ronald Regan when he signed Public Law 100-104 on August 18.

The Rockville Sister City Corporation is celebrating this holiday with a dinner at the Old Europe Restaurant on Wisconsin Avenue, Washington DC on Sunday, October 4, 2009 from 5:00 – 8:00 PM. In keeping with the season, Old Europe will serve its Oktoberfest Buffet. The event is open to the public. Tickets are \$30 for members and \$35 for non-members. Call Liz von Kaenel 301-251-6303 or Steve Fisher 301-424-7916 for information or reservations.



Upcoming Cultural Events

By Liz von Kaenel

Rockville's Antique Car Show will be held all day Saturday, October 17, 2009, on the grounds of Glenview Mansion. The Rockville Sister City Corporation will be staffing a booth that sells coffee and donuts in the morning and soda and water in the afternoon. This event is a money-raising opportunity for the organization so that we can support groups visiting or coming from our sister city, Pinneberg. We need volunteers to staff the booth in three-hour shifts, starting at 8:00 AM and continuing until about 5:00 PM. There will be

ample time for all volunteers to enjoy the car show. Help is really needed and will be much appreciated.

A concert showcasing the **Twelve Cellists** of the Berlin Philharmonic will be held at Strathmore Hall on Tuesday, November 10, 2009, at 8:00 PM. This concert is sponsored by the German Embassy and is part of a series of events commemorating the 20th anniversary of the fall of the Berlin Wall. If there is sufficient interest in this event, the RSCC will reserve a block of tickets (15 is the minimum number of seats that can be reserved as a block). The cost would be about \$25 per ticket. To reserve these seats, you will need to confirm your intention of attending with Liz by October 3, 2009.

On Friday, November 20, 2009, the Sister City Corporation will be hosting a **film night**. A German-themed film will be shown, and light refreshments will be served. The film night will be held in the Rockville Senior Center's Azalea Room and will begin at 7:00 PM. Further details will be sent to members in early November.



Contact Liz von Kaenel at 301-251-6303 or via email (eavonkaenel@comcast.net) if there are any questions, if you are interested in attending the concert at Strathmore, or if you can help with the Car Show.

Red Wines of France, *To Taste*, at the Fall Wine Tasting

By Wayne Savage

For the past 17 years members and friends of Rockville's Sister City Corporation have gathered to share excellent food, drink, and camaraderie while providing financial support for the RSCC's people-to-people efforts. That tradition will continue on Friday, October 30, 2009 at 7:30 PM when the



Rockville Sister City Corporation hosts its 6th annual Red Wine Tasting Social at the Rockville Senior Center.

"Last year's red wine tasting event presented Red Wines of Italy," said Wayne Savage, a member of the Rockville Sister City Corporation Board of Directors "This year we will be continuing our country by country tour of red wine producing areas of the world. We will continue with European Red Wines, specifically with the other leading wine producer, France." This wine tasting will feature red wines of French producers including a selection of Bordeaux, Cabernet Sauvignon, Burgundy, Cotes du Rhone and others. A variety of foods and cheeses will also be on hand to complement the wine offerings.

Admission is \$25 per person for RSCC members and \$30 for non-members. Membership applications can be found on the RSCC web site at www.rocknet.org/Community/SisterCities under "Join US." RSCC memberships can also be purchased at the Wine Social.

Reservations are accepted on a first come, first served basis and space is limited. Mail a check made payable to Rockville Sister City Corporation c/o City of Rockville, 111 Maryland Ave., Rockville, Md. 20850. For more information about the event, call 240-314-5029.

Race and Festival for World Peace

By James McConkey

The Rockville Sister City Corporation will support the Sister Cities International Race and Festival for World Peace, which is being held in Washington, DC, on Saturday, October 24, 2009 (United Nations Day). The goal of the event is to raise awareness of Sister Cities International's mission and its global network of citizen diplomats. RSCC will staff a table or booth showcasing our activities and Sister City relationships.

The festival, following the race, will be held in a small park at 21st Street and Pennsylvania Avenue, and will include performances of music, dance, and the spoken word. The City of Rockville is assembling a team of ten runners to participate in the 5K run/walk.

Pinneberg Student Visits

By Rotraut Bockstahler

We are proud to announce that a group of students and accompanying teachers from Pinneberg will be visiting Thomas Wootton High School in Rockville from September 26 through October 16, 2009 and that one participant in last year's Swim Team Training, Clemens Kaiser, has arrived to stay for the entire 2009 – 10 school year. He will be attending Richard Montgomery High School.

The student group can look forward to an interesting program that includes visits to Washington, DC, Baltimore, Mount Vernon, and touring Rockville by bike. One eagerly anticipated side trip will be a three-day visit to New York City, which the group did organize far in advance. They will also participate in three regular school days and many other activities.

We would like to take this opportunity to thank all those generous Rockville host families for opening their homes and hearts to our guests from Pinneberg.

The Rockville Mayor and Council will welcome the students, teachers, and host families on Monday, October 12, 2009 at City Hall at 7:00 PM. This is a public event, and you are invited to come and greet our visitors.

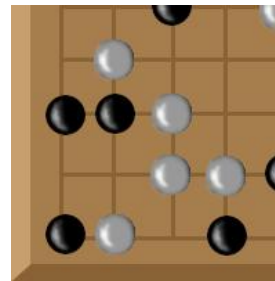
WEIQI/GO—An Ancient Game for the New Millennium

By John Goon

The Rockville Go & Chess Group meets every Friday evening at the Montgomery College Rockville Campus in the Campus Center cafeteria

at 7:00 PM. In support of the RSCC initiative to establish relations with Jiaxing, we have proposed a cultural education activity focused on the Asian strategy board game *Go*, or *WeiQi* as it is known in China. The proposal currently encompasses tournament fund raisers, inter-city matches over the Internet, and outreach programs with the community. If successful, this could be a win-win situation for all parties involved. The Rockville *WeiQi* players would gain much needed visibility, and the RSCC could expand its revenue and membership base.

Go is a strategic board game for two players. It is also known as *igo* (Japanese), *weiqi* or *wei ch'i* (Chinese), or *baduk* (Korean). Although the rules are very simple and easy to learn, *Go* is rich in strategic complexity.



The game involves two players who alternately place black and white playing pieces (which may be made of glass, plastic, clamshells, slate, or mineral stones) on the vacant intersections of a 19x19 grid. The object of the game is to control a larger portion of the board than one's opponent. A stone or a group of stones is captured and removed if it has no empty adjacent intersections (i.e., when it is completely surrounded by stones of the opposing color).

Placing playing pieces close together helps them support each other and avoid capture. On the other hand, placing pieces farther apart extends their influence across more of the board. Part of the strategic difficulty of the game stems from finding a balance between such conflicting interests. Players strive to serve both defensive and offensive purposes and choose between tactical urgency and strategic planning.

Go originated in ancient China more than 2,500 years ago. Although its exact origin is unknown, it

was established as a popular pastime by 300 B.C. The game is most popular in East Asia, but in recent years it has steadily increased in popularity in other parts of the world. *Go* was principally introduced to the West by Japan through its contacts with Germany in the late 1890s, which is why it is commonly known internationally by its Japanese name.

In China, *Go* was perceived as a popular game of the aristocracy, while *Xiangqi* (Chinese chess) was the game of the masses. *Go* was considered one of the four cultivated arts that a Chinese gentleman scholar should master, along with calligraphy, painting, and playing the musical instrument *guqin*.

In Japan—where it is called *go* (碁?) or *igo* (囲碁?)—the game became popular at the Japanese imperial court in the 8th century. It spread to the general public by the 13th century. In 1603, Tokugawa Ieyasu established a unified Japanese national government and supported the founding of several competing *Go* schools.

Go/WeiQi did not start to become popular in the West until the end of the 19th century, when German scientist Oskar Korschelt wrote a treatise on the game. By the early 20th century, *Go* had spread throughout the German and Austro-Hungarian empires. In 1905, Chess Master Edward Lasker learned the game while in Berlin. When he moved to New York, Lasker founded the New York Go Club. His book, *Go and Go-moku* (1934), helped spread the game throughout the US and set the stage for the founding of the American Go Association in 1935.

The Chinese Weiqi Association or Chinese Go Association oversees professional players as well as strong amateurs, functioning in the same way as the *Nihon Kiin* (Japanese Go Association) and other such groups.

New Fundraising Activities Proposed

By James McConkey

Two new fundraising activities have been proposed to the Rockville Sister City Corporation Board of Directors by members of the organization. These ideas, we believe, continue our focus of combining fundraising with cultural education to help our various communities bond together and to increase understanding between ethnic groups.



The first, proposed by John Goon, is to run **Wei Qi** tournaments in conjunction with existing clubs. *Wei Qi* is a Chinese strategy game. The Japanese refer to the game as *Go*, and Koreans call the game *Baduk*. We hope the tournaments will appeal to members of Rockville's disparate Asian communities who have been attracted to the RSCC programs by our impending relationship with Jiaying, China.

The second, introduced by a combination of members, proposes to integrate elements of traditional German *Volksmarch* programs with bicycling, creating a **Volksreit (People's Ride) activity**. Rockville has a strong bicycling program, and this activity would mesh nicely with both that program and the new bicycling infrastructure in the city.

We are looking for people interested in such programs to work with the organizers to make these programs a reality. If you have such interest, please contact our Ways and Means chairman, Steve Fisher, at SteveF8170@aol.com or by phone at 301-424-7196.

Students Reflect on Recent Pinneberg Exchange

By Rotraut Bockstahler and Tony DeRosa

Recently a group of 11 students from Wootton High School and their German teacher, Mr. Anthony DeRosa, spent three weeks in Pinneberg, Rockville's sister city. In the next few editions of

the RSCC newsletter, we will be including some of the reactions of these students to their experience. To start us off, here are reflections by two students.

The exchange trip to Pinneberg was a wonderful experience for me. It gave me an opportunity to visit Germany that I would not have had otherwise, and the trip took the best form a visitor could ask for. Some tourists spend their time hopping from city to city, not staying long enough to get acquainted. By staying with a host family, we not only got to thoroughly explore Hamburg and Pinneberg, we got to see daily life in Germany.

We rode bikes everywhere. We ate German food, and we were introduced to the German school system. This exchange trip was a wonderful and unique chance to step into someone else's shoes, an opportunity we wouldn't have had without the friendship between Rockville and Pinneberg.

—Beth Vaughn

For most people, the trip to Pinneberg was their first time in Germany. However, this was not the case for me. I have visited Germany many times to visit my grandparents, who live in Bavaria. This trip was, however, my first time in northern Germany. The main reason I decided to go on this trip was to improve my German language abilities. I also wanted to familiarize myself with Hamburg, which—not to my surprise—is much different from Bavaria. I was also surrounded by teenagers like myself. All the other times I have been to Germany were to visit my grandparents. I rarely ever met anyone else my age. To be in Pinneberg and spend time with other students my age was a whole new experience. It was interesting to see the huge difference in the school system at the Theodor-Heuss Schule. It seemed so much more relaxed, not like at Wootton where everyone is constantly stressed out over grades. Aside from all the academics, the trip to Pinneberg was a chance to meet new people and make new friends. I am happy to say that I am still in contact with Merle and even with a few of her



friends who did not participate in the exchange. I also chat with Susi and Sven on Facebook, as well as a few of the girls from the GUGS school who are coming to Rockville in September. Like me, many of the other American students plan to return to Pinneberg one day. I believe that is the best gift this exchange has given us.

—David Musher

Communications

Board Meeting Schedule

RSCC board meetings are open to the public. Board meetings are held on the second Wednesday of each month *except December* at 7:30 pm in City Hall, 111 Maryland Avenue, in Rockville.

RSCC Seeking IT Help

By James McConkey

The Rockville Sister City Corporation is seeking persons with IT skills, including building and maintenance of a website and in establishing an electronic network that will link the RSCC to community and homeowners' associations.

To this end, we have contacted Montgomery College's Department of Computer Applications and students from Wootton High School. But we are open to aid from any qualified person(s). If you are willing provide such community service, please contact Jim McConkey at jfmccjr@comcast.net or phone 301-926-6059.

Membership

Annual Membership Meeting

By James McConkey

The Rockville Sister City Corporation will hold its 2009 Annual Membership Meeting on Tuesday, September 22 at the Glenview Mansion, 603

Edmonston Drive in the Rockville Civic Center starting at 7:30 PM.

Reports will be given by the principal officers detailing the accomplishments of the past year and their recommendations for activities in 2010. There will also be several reports by committees summarizing the work leading up to the Friendly Exchange Relations Agreement executed on September 14, 2009 with Jiaying, China and planned initiatives for more community involvement.

A highlight of the meeting will be several reports by Wootton High School Students who recently returned from an exchange visit to our Sister City, Pinneberg, Germany. The eleven students stayed in the homes of families in Pinneberg and experienced something of daily life and student life in Germany. They also had several opportunities to visit Berlin and other areas in Schleswig-Holstein surrounding Pinneberg. The reports will tell something of the impact such exchanges have on young lives. I think you will find these reports interesting, especially if you have students of an age who could participate in student exchanges. We hope to also have a slide presentation of photos taken during the visit.

The principal business of the evening will be the election of members of the Board of Directors. Five terms are ending this year. David L'Heureux, President-Emeritus, is not seeking re-election and a new member of the board must be elected as his replacement. The other vacancy, created by a leave of absence requested by Rotraut Bockstahler, Past-President, will be filled by appointment of the Mayor and Council in accordance with our By-Laws. Three of the incumbent officers will seek to continue their positions on the board: Steve Fisher, Treasurer; Brigitta Mullican, Past-President, and Liz von Kaenel, Cultural Affairs Director. A nominating committee of Joe Batz, Jerold Briggs, and Janice Solomon will present candidates for these positions.

Exercise your rights and privileges as a member of the Rockville Sister City Corporation, see how your dues are invested, and vote for your candidates. Meet and greet the many new members who have joined since the relationship with Jiaying was started.

Membership Survey

By Rotraut Bockstahler

We are happy to report that the activities of the Rockville Sister City Corporation are increasing over time. Not only are we helping the City of Rockville establish friendly relations with Jiaying in China, but we are also facilitating student visits between Rockville and Pinneberg, Germany. Most importantly, however, our organization is trying to become part of an interesting network that reaches the citizens of Rockville. Our monthly board meetings are informative, and we invite you, our members, to join us. The board meets on the second Wednesday of each month at 7:30 PM at City Hall. Board meetings are open to the public.

In previous issues of our RSCC Newsletter, you read about the survey that we are conducting with our membership, and you might have received several phone calls from one of our board members. We know that you support the Sister City idea and outreach to all ethnic groups in the Rockville community. So, we would like to make that concept a more organized, interesting, attractive, and vital part of our organization. Here is your chance to participate in the life of our community by helping with our events, making your ideas about improving events known, and also having fun with fund raisers. We need your help and participation. The answers to our survey questions will not go unnoticed. We are reaching out to you to get you more involved. The cultural exchanges are based on friendly relations among all of us. Please note our upcoming events, either in announcements that you receive by e-mail or



checking the dates in this issue of our newsletter.
Come and join us!

Become a Member

We invite anyone who is interested in joining us to fill out the membership application in this newsletter. The only requirements for membership are completing the application and paying annual dues. Current members, please don't forget to renew your membership.

The Annual Membership meeting will be held at the Glenview Mansion in the Rockville Civic Center on Tuesday, September 22, 2009 at 7:30 PM.

Upcoming Events

- 7 PM, first Friday of each month – “Stammtisch” sponsored by Frederick Maryland Sister City at Brewer's Alley on Market Street
- September 9, 7:30 PM – Board Meeting (all are welcome)

- September 13-14, all day – Visitors from Jiaxing tour Rockville
- September 22, 7:30 PM – Annual Meeting, Glenview Mansion, report of year's activities, election of officers and reception.
- September 26 – October 16 – Pinneberg students visit Wootton HS
- October 4, 5-8PM – German American Day dinner
- October 12, 7PM – Mayor and council welcome Pinneberg students at council meeting
- October 14, 7:30 PM – Board Meeting (all are welcome)
- October 17, 8-5:00 – Antique car show fundraiser
- October 24 – Sister Cities International Race and Festival for World Peace, DC
- October 30, 7:30 PM – annual fall red wine tasting
- November 10, 8:00 PM - Twelve Cellists at Strathmore Hall
- November 11, 7:30 PM – Board Meeting (all are welcome)
- November 20, 7pm – German Film night, Rockville Senior Center



Volunteers Needed

Please help at the RSCC fundraiser at Rockville's Antique Car Show on Saturday, October 17.

Red wine tasting
Friday, October 30
7:30 PM

ROCKVILLE SISTER CITY CORPORATION (RSCC)
Membership Application/Renewal Form

I would like to (check one) ___ renew, or ___ apply for membership. Enclosed is my tax deductible payment (check one):
_____ \$20 Individual, _____ \$30 Family, or _____ \$100 Corporate Membership, for the Calendar Year _____.
Additional tax deductible contribution of \$ _____, **Total enclosed \$ _____**. RSCC is a Tax Exempt, Not-For-Profit Corporation.

Please print below.

Please, Please provide your email address. Otherwise we have no way of keeping you informed of our activities and events.

Name: _____ Spouse Name: _____ Email Address: _____

For internal use only. We do not release to other organizations.

Street Address: _____ City: _____ State: _____ Zip Code: _____

Home Phone: _____, Work Phone: _____, Cell Phone: _____

Make checks payable to: RSCC Send to: Rockville Sister City Corporation, c/o Rockville City Hall,
111 Maryland Avenue, Rockville, MD 20850-2364

AREAS OF INTEREST: (TO ALL MEMBERS, NEW & RENEWAL, PLEASE, PLEASE CHECK AT LEAST ONE.)

I would be interested in: ___ Hosting visitors from Pinneberg; ___ Hosting exchange students (high school); ___ Fundraising;
___ Helping with membership drive; ___ Helping w/ Wine Tasting Events; ___ Helping w/ Memorial Day Parade; ___ Organizing
Cultural or Sport Exchanges; ___ Bicycle Tours; ___ Developing or Helping with Other Events; ___ Serving on Board of Directors;
___ Just participating; ___ Other (specify below) (These are not commitments, but do help us understand our members' interests.)

Other Comments, suggestions, etc. _____

(Continue on reverse side and check here ___ if appropriate)

Memberships are for the calendar year. There is no prorating of memberships. Members who join on or after September 1st will be credited with membership through the remainder of that current calendar year AND the full following calendar year.

Application/Renewal Form Ver.10-5(Revised 8/18/09)

------(please cut here)------(please cut here)------(please cut here)-----

Rockville Sister City Corporation
c/o Rockville City Hall
111 Maryland Avenue
Rockville, MD 20850-2364